

LAARS-STOR[®] SS

Single-Wall Indirect Water Heaters

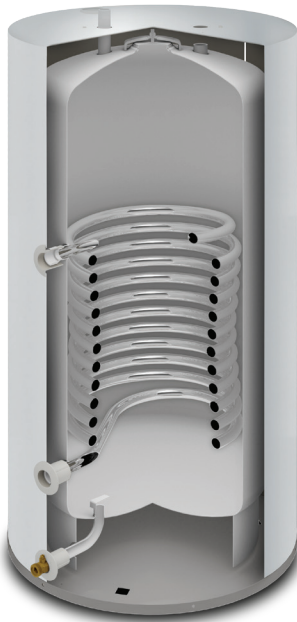
DESIGNED TO DELIVER DURABILITY, SUPERIOR PERFORMANCE AND FAST RECOVERY.



- Passivated 444 stainless steel alloy tank and heat exchanger with superior corrosion protection
- 1" O.D. stainless steel heat exchanger coil - low restriction minimizes pressure drop
- 2" non-CFC foam insulation covers the sides and top of tank, for rigidity, improved efficiency and less energy consumption
- Front Boiler Connections for easier installation
- Includes T&P valve and aquastat with stainless steel well
- Factory installed sediment reducing inlet tube reduces sediment build



LAARS-STOR[®] SS tank and heat exchanger coil are designed to prevent corrosion and maximize heat transfer to deliver the hot water your application needs.



LAARS-STOR[®] SS Single-Wall Indirect Water Heater with a LAARS[®] NEOTHERM[®] boiler for an ideal hydronic system solution.

Specs at a Glance LAARS-STOR[®] SS Models

Model Number	Capacity		Height		Diameter		Approx. Shipping Weight	
	(Gal.)	(Liters)	(in.)	(mm)	(in.)	(mm.)	(lbs.)	(kg.)
LS-SS-30-L	29	110	31 ⁵ / ₈	803	24	610	75	34
LS-SS-40-L	38	142	38 ¹ / ₄	972	24	610	91	41
LS-SS-50-L	50	189	48	1219	24	610	103	47
LS-SS-75-L	73	274	65 ⁵ / ₈	1667	24	610	142	64
LS-SS-120-L	111	420	63 ³ / ₈	1610	30 ¹ / ₄	768	217	98

AHRI Certified Water Heater Ratings

Model Number	First Hour Delivery Rating (Gal./Hr.)	First Hour Delivery Rating (Liters/Hr.)	Continuous Draw @135°F (Gal./Hr.)	Continuous Draw @57°C (Liters/Hr.)	Standby Heat Loss Rating (°F/Hr.)	Standby Heat Loss Rating (°C/Hr.)	Minimum Heat Required Rate (BTU/Hr.)	Minimum Heat Required Rate (kW./Hr.)	Minimum Heat Source Flow Rate (Gal./Min.)	Minimum Heat Source Flow Rate (Liters/Min.)
LS-SS-30-L	179	678	160	606	0.8	0.44	105,000	30.8	14.0	53.0
LS-SS-40-L	237	897	209	791	0.6	0.33	135,000	39.6	14.0	53.0
LS-SS-50-L	269	1018	229	867	0.5	0.27	145,000	40.5	14.0	53.0
LS-SS-75-L	367	1389	307	1162	0.4	0.22	193,000	56.6	14.0	53.0
LS-SS-120-L	409	1548	319	1208	0.3	0.16	199,000	58.3	9.0	34.0

NOTE: These certified ratings were obtained with a heat source output and flow rate as specified and a 180°F (82°C) boiler water supply temperature. Other results will be obtained under different conditions.

LAARS[®] Indirect Water Heaters are independently performance certified by the Air Conditioning, Heating and Refrigeration Institute. For full specifications and other technical documentation, visit www.laars.com



Customer Service and Product Support: 800.900.9276 • Fax 800.559.1583

Headquarters: 20 Industrial Way, Rochester, NH 03867 • 603.335.6300 • Fax 603.335.3355

9 Brigden Gate, Halton Hills, Ontario, Canada, L7G 0A3 • 905.203.0600 • Fax 905.636.0666

www.LAARS.com

Litho in U.S.A.

© Laars[®] Heating Systems Co. 20-04

Document 11078B