



FIELD CONTROLS

REPLACEMENT PARTS

May 2012

Replacement Parts

COMBUSTION

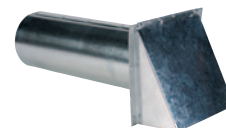
CAS SERIES COMBUSTION AIR SYSTEMS			
MODEL	REF.	DESCRIPTION	PART NO.
CAS-2B	A	VRV-4	46257100
	B	IAH-4 Intake Air Hood	46292000
CAS-2C	A	VRV-4	46257100
	B	IAH-4 Intake Air Hood	46292000
CAS-2W	A	VRV-4	46257100
	B	IAH-4 Intake Air Hood	46292000
CAS-2B90E	A	VRV-4	46257100
CAS-2C90E	B	IAH-4 Intake Air Hood	46292000
CAS-2BB	A	VRV-6	46274900
CAS-2B 375	B	IAH-6 Intake Air Hood	46293000
CAS-2CB			
CAS-3	B	IAH-4 Intake Air Hood	46292000
	C	Air Pressure Switch	46273100
	D	Motorized Fan	46274100
	E	120 VAC Relay For CAS-3	46257300
CAS-4 CAS-4P	B	IAH-4 Intake Air Hood	46292000
	C	Air Pressure Switch	46273100
	D	Motorized Fan	46274100
	E	24 VAC Relay For CAS-4	46161400
	H	ADA-1	46473300
CAS-4Jr.	B	IAH-4 Intake Air Hood	46252600
	C	Air Pressure Switch	46525700
	I	Fan Blade	46528500
	E	24 VAC Relay For CAS-4Jr	46161400
	G	Motor	46070100
CAS-4mV	B	IAH-4 Intake Air Hood	46292000
	C	Air Pressure Switch	46158500
	D	Motorized Fan	46274100
	E	24 VAC Relay	46161400
	F	24 VAC Transformer	46160900
	CAS-6*	C	Air Pressure Switch
CAS-6*	D	Blower Wheel	46363600
	G	Motor	46363400
	CAS-7*	C	Air Pressure Switch
CAS-7*	D	Blower Wheel	46363700
	G	Motor	46363400

* NOTE: CAS-6 and CAS-7 now include a 120V (RJR-6) relay and 24V (RJR-5) relay.

A



B



C



D



E



F



G



H



I



COMBOVENT/ SWG SERIES POWER VENTER			
MODEL	REF.	DESCRIPTION	PART NO.
SWG-3	A	Replacement Motor Assembly	46196601
	B	Blower Wheel	46131800
SWG-4	A	Replacement Motor Assembly	46131501
	B	Blower Wheel	46131800
SWG-4 HD 4HDS CV-4 CV-4VR	A	Universal Replacement Motor Assembly	46234800
	B	Blower Wheel, Stainless	46310400
	C	Motor Enclosure	46451601
	D	Motor Enclosure, Stainless	46526401
SWG-5 5S CV-5 CV-5VR	A	Universal Replacement Motor Assembly	46234900
	B	Blower Wheel, Stainless	46213800
	C	Motor Enclosure	46451602
	D	Motor Enclosure, Stainless	46526402
SWG-6 6S	A	Universal Replacement Motor Assembly	46235000
	B	Blower Wheel, Stainless	46385800
	C	Motor Enclosure	46451603
	D	Motor Enclosure, Stainless	46526403
SWG-8	A	Replacement Motor Assembly	46160101
	B	Blower Wheel	46154800
SWG-10	A	Replacement Motor Assembly	46414101
SWG-12	A	Replacement Motor Assembly	46414102
SWG-14	A	Replacement Motor Assembly	46414103

A



B



C



D



Replacement Parts

VENTING

PV SERIES POWER VENTER			
MODEL	REF.	DESCRIPTION	PART NO.
PVE-1200	A	Replacement Motor	46226500
	B	Blower Wheel	46124000
PVG-100	A	Replacement Motor	46032000
	B	Blower Wheel	46080100
	D	Pressure Switch	46282900
	E	Timer Fixed Post Purge	46282800
PVG-300	A	Replacement Motor	46032000
	B	Blower Wheel	46033400
	D	Pressure Switch	46246100
	E	Timer Fixed Post Purge	46282800
PVG-600	A	Replacement Motor	46083300
	B	Blower Wheel	46089400
	D	Pressure Switch	46283000
	E	Timer Fixed Post Purge	46282800
PVO-300	A	Replacement Motor	46032000
	B	Blower Wheel	46033400
	C	Pressure Switch	46311000
PVO-600	A	Replacement Motor	46083300
	B	Blower Wheel	46089400
	C	Pressure Switch	46311000
PVU-300	F	Pressure Switch	46513200
	G	Circuit Board	46399200

A



B



C



D



E



F



G



MODEL RJR-5, RJR-6

MODEL	REF.	DESCRIPTION	PART NO.
RJR-5	A	24 Volt SPDT Relay	46080200
RJR-6	A	120 Volt SPDT Relay	46111100

A



MODEL CK-20FV/FG MILLIVOLT GAS-FIRED WATER HEATER CONTROL KIT

REF.	DESCRIPTION	PART NO.
B	Fan Control Gas Pressure Switch	46506800
C	GSK-3 Spillage Switch Kit	46086400
D	TCA-1 Thermocouple Adapter (FV model)	46082700
D	TCA-2 Left Hand Thread (FG model)	46429900

B



C



D



MODEL CK-21 MILLIVOLT INSTANTANEOUS GAS-FIRED WATER HEATER CONTROL KIT

REF.	DESCRIPTION	PART NO.
B	Fan Control Gas Pressure Switch	46506800
E	SSK-3 Spillage Switch Kit	46111503

E



MODEL CAC-24 AND CAC-120 COMBUSTION AIR CONTROLLER

REF.	DESCRIPTION	PART NO.
F	Pressure Switch	46273100
A	RJR-5 24 Volt Relay Kit (CAC-24)	46080200
A	RJR-6 120 Volt Relay Kit (CAC-120)	46111100

F



G



MODEL CK-41F and CK-41P GAS-FIRED CONTROL KIT WITH FIXED POST PURGE

REF.	DESCRIPTION	PART NO.
F	Pressure Switch	46273100
G	Timer Fixed Post Purge	46282800
C	GSK-3 Spillage Switch	46086400
H	Wiring Harness for CK-41P only	46457200

H



Replacement Parts

VENTING

MODEL CK-43 24 VAC GAS-FIRED CONTROL KIT

REF.	DESCRIPTION	PART NO.
A	Pressure Switch	46273100
B	4" MG1 Draft Control	46198901

MODEL CK-43F 24 VAC GAS-FIRED CONTROL KIT

REF.	DESCRIPTION	PART NO.
A	Pressure Switch	46273100
B	4" MG1 Draft Control	46198901
C	Timer Fixed Post Purge	46282800

MODEL CK-61 120 VAC OIL-FIRED CONTROL KIT WITH ELECTRONIC POST PURGE

REF.	DESCRIPTION	PART NO.
A	Pressure Switch	46273100
D	WMO-1 Secondary Safety Switch	46086900
E	RJR-6 120V Relay Kit	46111100

MODEL CK-62 120 VAC OIL-FIRED CONTROL KIT

REF.	DESCRIPTION	PART NO.
A	Pressure Switch	46273100
E	RJR-6 120V Relay Kit	46111100
D	WMO-1 Secondary Safety Switch	46086900
F	PPC-4 Post Purge	46094100

MODEL CK-63

REF.	DESCRIPTION	PART NO.
A	Pressure Switch	46273100
G	Circuit Board Assembly	46399200
D	WMO-1 Secondary Safety Switch	46086900

A



B



C



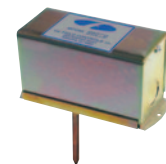
D



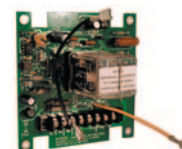
E



F



G



CK-81 OPERATED OFF A 24-VOLT CIRCUIT

REF.	DESCRIPTION	PART NO.
A	Pressure Switch with Gold Contacts	46158500
B	24 Volt Relay	46161400
C	24 Volt Transformer CK-81	46160900
D	Timer Fixed Post Purge	46282800

MODEL CK-91FV/FG, GAS-FIRED APPLIANCE and WATER HEATER COMBINATION KIT

REF.	DESCRIPTION	PART NO.
E	Pressure Switch	46273100
F	Gas Pressure Switch W/PP Opt.	46506800
G	GSK-3 Spillage Switch Kit	46086400
H	4" MG1 Draft Control	46198901
D	Timer Fixed Post Purge	46282800
I	TCA-1 Thermocouple Adapter	46082700
I	TCA-2 Use with FG series only	46429900

NOTE: All of these parts are not in all of the Control Kits listed.

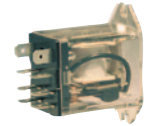
MODEL CK-92FV/FG, CK-92 FVP/FGP GAS-FIRED APPLIANCE and WATER HEATER COMBINATION KIT

REF.	DESCRIPTION	PART NO.
E	Pressure Switch	46273100
F	Gas Pressure Switch W/PP Opt.	46506800
G	GSK-3 Spillage Switch Kit	46086400
H	4" MG1 Draft Control	46198901
D	Timer Fixed Post Purge	46282800
I	TCA-1 Thermocouple Adapter	46082700
I	TCA-2 use with FG/FGP series only	46429900
J	Wiring Harness only used with P series	46457200

A



B



C



D



E



F



G



H



I



J



Replacement Parts

VENTING

GVD VENT DAMPER MOTOR

MODEL	REF.	DESCRIPTION	PART NO.
GVD	A	Motor Assembly Plastic Base	46491600

A



OVD VENT DAMPER MOTOR

MODEL	REF.	DESCRIPTION	PART NO.
OVD	A	Motor Assembly Aluminum Base	46564000

GVD UNIVERSAL WIRING KIT

MODEL	REF.	APPLICATION	PART NO.	
FC-4/6	B	Bryant	Moncrief	46579100
		Buderus	Payne	
		Burnham	Raypack	
		Carrier	Triple Aquastat with plug	
		Day & Night	Utica	
		Fraser-Johnson	Vaillant	
		Honeywell ignition module	Weil-McLain	
		Lennox	Whirlpool with Penn G-60 & G-65 ignition plug	
	Luxaire	York		
FC-Loch	B	Lochinvar	46579100	
PP-5	B	American Standard	46579100	
		Slant Fin		
		Trane		
QP-4	B	Teledyne Laars	46579100	
VP-6	B	H B Smith	46579100	

B



TYPE C DRAFT INDUCERS MOTOR and FAN BLADE			
MODEL	REF.	DESCRIPTION	PART NO.
6" TYPE C	A	Motor	04047100
	B	Fan Blade	03896200
8" TYPE C	A	Motor	04047100
	B	Fan Blade	03898700
10" TYPE C	A	Motor	46067500
	B	Fan Blade	46306200
13" TYPE C	A	Motor	46067500
	B	Fan Blade	04314000

TYPE C SPEED CONTROL			
MODEL	REF.	DESCRIPTION	PART NO.
6" & 8" TYPE C	C	Speed Control 6" & 8"	04325108
10" & 13" TYPE C	C	Speed Control 10" & 13"	04325113

DI DRAFT INDUCERS			
MODEL	REF. NO.	DESCRIPTION	PART NO.
DI-1	D	Motor	46070100
	E	Fan Blade Assembly	46073700
DI-2	D	Motor	46070200
	E	Fan Blade Assembly	46075000
DI-3	D	Motor	46124300
	E	Fan Blade Assembly	46090600
DI-4	D	Motor	46120300
	E	Fan Blade Assembly	46553201
DI-5	D	Motor	46120300
	E	Fan Blade Assembly	46553202

ACCESSORIES FOR DRAFT INDUCERS and CONTROL KITS			
MODEL	REF.	DESCRIPTION	PART NO.
DIP-1	F	Fan Proving Switch	46089800
RJR-5	G	24 Volt SPDT Relay	46080200
RJR-6	G	120 Volt SPDT Relay	46111100

A



B



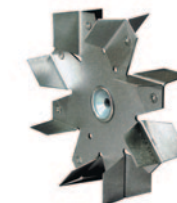
C



D



E



F



G



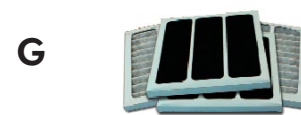
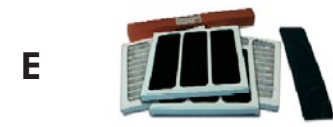
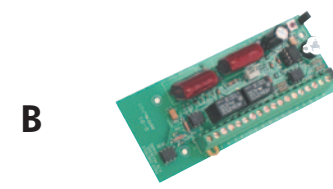
Replacement Parts

IAQ SYSTEMS

UV-AIRE® AIR PURIFICATION BALLAST			
MODEL	REF.	DESCRIPTION	PART NO.
UV-12	A	Ballast Assembly	46365508
UV-18	A	Ballast Assembly	46365509
UV-28	A	Ballast Assembly	46365513
UV-18X	A	Ballast Assembly	46365503
UV-E	A	Ballast Assembly	46365506
UV-C/HPC	A	Ballast Assembly	46365510
UV-HP	A	Ballast Assembly	46365513
UV-1500C	A	Ballast Assembly	46365514
UV-C	B	Circuit Board	46436300
UV-16/24	C	UV-16/24 Transformer	46529500

UV-AIRE® AIR PURIFICATION LAMPS			
MODEL	REF.	DESCRIPTION	PART NO.
UV-12, UV-1500C	D	Lamp 12"	46365401
UV-16/120, UV-16/24	D	Lamp 16"	46511200
UV-18	D	Lamp 18"	46365402
UV-28	D	Lamp 28"	46365403
UV-500C	D	Lamp 8"	46508000

PORTABLE UV-AIRE® ANNUAL REPLACEMENT KITS			
MODEL	REF.	DESCRIPTION	PART NO.
UV-1500RK	E	Annual Replacement Kit	46453600
UV-500RK	F	Annual Replacement Kit	46474500
UV-1500RF	G	4 Pack Filter Kit	46508300
UV-500RF	H	4 Pack Filter Kit	46507900



MEDIA AIR CLEANER™ REPLACEMENT KITS

MODEL	REF.	DESCRIPTION	PART NO.
FCRM8-1400	A	3 Pack Filter Kit-MERV 8	46585900
FCRM8-2000	A	3 Pack Filter Kit-MERV 8	46586000
FCRM11-1400	A	3 Pack Filter Kit-MERV 11	46568500
FCRM11-1600	A	3 Pack Filter Kit-MERV 11	46607000
FCRM11-2000	A	3 Pack Filter Kit-MERV 11	46568600

A



FLEX FILTER™ REPLACEMENT

MODEL	REF.	REPLACES	SIZE	PART NO.
FLEX-1	B	Field Controls, General, Trion, Skuttle- MERV 11	16" x 20" x 5" or 20" x 20" x 5"	46600407
FLEX-2	B	Field Controls, General, Trion, Skuttle- MERV 11	16" x 25" X 5" or 20" x 25" x 5"	46600401
FLEX-3	B	Honeywell- MERV 11	16" x 20" or 20" x 20"	46600406
FLEX-4	B	Honeywell- MERV 11	16" x 25" x 4" or 20" x 25" x 4"	46600405
FLEX-5	B	Aprilaire 2200, 2210- MERV 11	20" x 25" x 4"	46600402
FLEX-6	B	Aprilaire 2310- MERV 11	19" x 20" x 4"	46600403
FLEX-7	B	Aprilaire 2400, 2410- MERV 11	16" x 28" x 4"	46600404

B



Replacement Parts

HUMIDIFIERS

STEAM HUMIDIFIERS			
MODEL	REF.	DESCRIPTION	PART NO.
2120	A	120 Volt Heater Assembly (for Model S2000)	094021A0201
2240	A	240 Volt Heater Assembly (for Model S2020)	094021A0202
2001	B	24 Volt Solenoid Valve Assembly	094021A0203
2002	C	Thermistor Probe Assembly	094021A0205
2003	D	Water Level Probe Assembly	094021A0204
2010	E	120V Circuit Board Assembly (for Model S2000)	094021A0206
2011	E	200V Circuit Board Assembly (for Model S2020)	094021A0207
2006	F	Drain Valve Assembly	094021A0208
2007	G	Tank Baffle	094021A0209
2008	H	Insulation Kit	094021A0210
WH-100	I	Water Hammer Arrestor	090478A0001
Z-100	J	Anode	090421A0211
2009	K	Under Duct Tank Enclosure	090421A0156
APD	L	Air Proving Device	090558A0001
WC-25	M	Steam Treat Water Filter Cartridge	094021A1122
DHS	-	Drain Hose Kit	094024A0001

A



B



C



D



E



F



G



H



I



J



K



L



M

